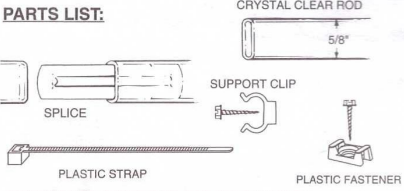


SPECIALTY WINDOW HARDWARE KIT ASSEMBLY, INSTALLATION AND SEWING INSTRUCTIONS

For inside mount applications only. Use separate "Clear Arch Rod" Installation Instructions for outside mount applications.

PARTS LIST:



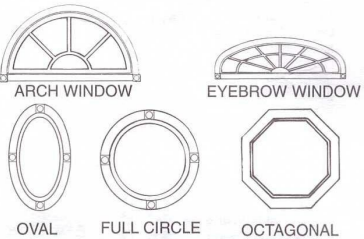
SPECIALTY WINDOW KIT INCLUDES:

- 46" KIT:**
 (1) 46" Crystal Clear™ Rod
 (5) Clear Clips With Screws
 (1) Plastic Fastener
 (1) Splice
 (2) 14" Straps
 (1) Measuring and Sewing Installation Guide

- 92" KIT:**
 (2) 46" Crystal Clear Rod
 (7) Clear Clips With Screws
 (1) Plastic Fastener
 (2) Splices
 (2) 14" Straps
 (1) Measuring and Sewing Installation Guide

Combine two or more kits for larger windows.

WHERE TO USE:



BEFORE YOU SEW

MEASURING / SEWING TERMS

- Ray** - The measurement from the center point to the longest point along the arch or perimeter of the window.
- Perimeter** - Distance around your inside window opening (A).
- Header** - A decorative ruffle around the edge of the rod pocket.
- Rod Pocket** - A stitched-in-place hem that is open at both ends so a rod can be inserted. To allow fabric to fit easily onto the rod, the rod pocket should be 1/2" to 1" larger than the rod.

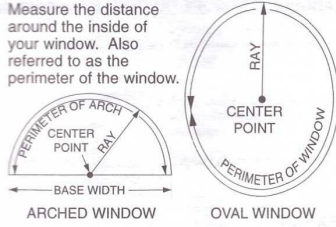


MEASURING YOUR WINDOW

- Step 1:** Mark your center point or the point where you want your center rosette to appear on your window. For arch windows, measure the width of the base of your window and mark the center point.
- Step 2:** Measure the ray or longest point from the center out to the inside of your window frame for inside mounts.

Springs Window Fashions LLC
 7549 Graber Rd., Middleton, WI 53562-1096

Step 3: Measure the distance around the inside of your window. Also referred to as the perimeter of the window.



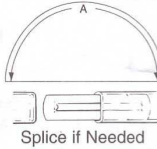
FABRIC YARDAGE GUIDELINES

- Because fabric widths vary, exact yardage cannot be determined until fabric has been selected. Once you have measured your window and have chosen your fabric, follow these simple steps to determine how much fabric to buy:
1. Finished Width X Fullness (1-1/2 or 2) = Cut Width of Fabric
 2. Cut Width ÷ Fabric Width = Number of widths needed
 3. Number of widths needed X Cut Length = Total fabric length needed (in inches)
 4. Total fabric length needed ÷ 36 = Number of yards needed

FOR ARCHED WINDOWS

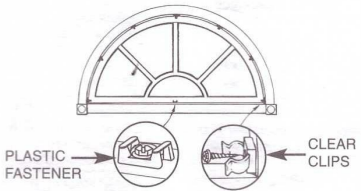
ROD CUT LENGTH

- To determine rod cut length (A), hold the end of a tape measure in one of the bottom corners of the arch window. Carefully press the tape along the inside of the arch. Read the total length from the tape measure. Do not include the base measurement. Cut the rod to length with a scissors or a serrated knife. If you purchased 92" kit for larger windows, splice rods together to reach the desired length.



INSTALLING THE ROD

- Mount clear clips inside frame of window every 10-12 inches. Mount a clear clip on both sides near the bottom of the arch. #6X1" slotted hex head screws are included for installing each clip. Mount the plastic fastener at center of bottom window frame in line with the clear mounting clips.



FABRIC CUT LENGTH

- Cut Length** is the amount of fabric needed to create your finished specialty window treatment including the amount needed for rod pockets, seam allowances, hems and headers.
- The cut length for each type of specialty window treatment is given with specific sewing instructions.
- Pattern Repeat** is a distinctive pattern in fabric that needs to be matched. Measure the lengthwise distance between pattern repeats and add that amount to the cut length.

EXAMPLE:

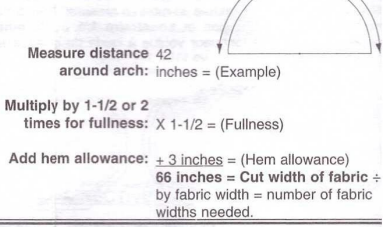
- To determine fabric cut length:
- Add yardage for header, rod pockets and hem allowance:**
- + 1/2 inch = (Hem turn under)
 - + 2 inches = (1 inch rod pocket X 2)
 - + 1 inch = (1/2 inch header X 2)
 - 3-1/2 inches
- Add to Length of Ray Measurement:** +18 inches = (Ex: Ray Measurement)
- Add Rosette Allowance:**
- + 14 inches = (7 inch rosette allowance X 2)
 - + 1/2 inch = (Hem Allowance)
 - 36 inches = Cut Length of Fabric

RULE OF THUMB: Add 18 inches to your "Ray Measurement" or longest point from the center, to determine fabric cut length.

FABRIC CUT WIDTH (For unlined treatments)

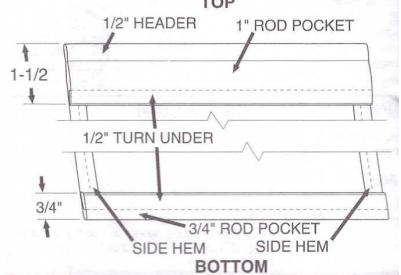
- Cut Width** is the finished width plus the amount needed for fullness, side hems and seam allowances. Several fabric widths may need to be seamed together to achieve the necessary cut width.
- Amount of fullness (shirring) is determined by fabric weight and personal preference. For **medium to heavy fabrics**, multiply the distance around the perimeter of your window by 1-1/2 times. For **sheer to lightweight fabrics**, multiply the distance around the perimeter by times.
- Add 3 inches to this measurement for side hems.

EXAMPLE:



SEWING INSTRUCTIONS

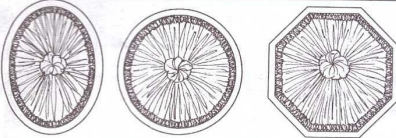
- Step 1:** Finish side hems as desired.
- Step 2:** Turn top edge of fabric under 1/2 inch and press. To make a 1/2 inch header and a 1 inch rod pocket, turn pressed fabric edge under 1-1/2 inches and stitch close to pressed edge. Sew a 1/2 inch header and a 1 inch rod pocket at the top of the fabric panel.
- Step 3:** Turn bottom edge of fabric under 1/2 inch and press. Fold this edge under 3/4 inch and stitch to create a bottom rod pocket.



CREATING A SUNBURST TREATMENT (ARCH WINDOW)

1. Shirr top rod pocket over clear rod. Thread strap through bottom pocket and cinch to first locking position to create a circle. Do not pull tight yet.
2. Snap rod with fabric into clear clips to outline the arched window shape. Space fabric around arch as desired.
3. Pull fabric taut toward center to remove slack, slip second strap through the plastic fastener and wrap strap around center of fabric to pull tight.
4. Do not pull straps tight yet.
5. Pull fabric through center of circle to create rosette.
6. Arrange fabric folds evenly around window. When satisfied with appearance tighten straps. Trim excess straps. Note: On eyebrow windows the center rosette will be fan-shaped.

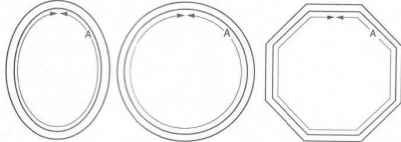
FOR OVAL, ROUND AND OCTAGON WINDOWS



OVAL ROUND (PORTHOLE) OCTAGON

ROD CUT LENGTH

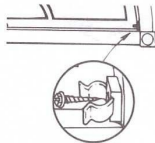
To determine rod cut length (A), measure around the inside of the window with a tape measure. Read the total length from the tape measure and **subtract 1/4 inch** from this measurement. Cut the rod to length with scissors or with a serrated knife.



For an **octagonal window**, carefully, press the clear rodding along each side of the octagon, and make a bend in the rod at each corner. Follow around the total outline of the window and then cut the rod to size. Subtract 1/4 inch off the total rod measurement to allow for easy installation. For larger windows, splice the rods together to reach the desired length.

INSTALLING THE ROD

Mount the clear clips inside the frame every 10-12 inches and place rod into clips. For octagonal windows, be sure to mount clips at each corner or bend in the rod. **Do not** mount the plastic fastener for oval, round or octagonal windows.



FABRIC CUT LENGTH

To determine fabric cut length:

Add yardage for header, rod pockets and hem

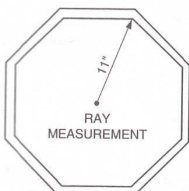
allowance: + 1/2 inch = (Hem turn under)
+ 2 inches = (1 inch rod pocket X 2)
+ 1 inch = (1/2 inch header X 2)
3-1/2 inches

Add length of ray measurement: +Ray Measurement

Add Rosette Allowance: +7 inches = (3-1/2 inches X 2 for Rosette)
+2 inches = (Seam allowances)
12-1/2 inches + Ray Measurement = Fabric Cut Length

RULE OF THUMB: Add 12-1/2 inches to your "Ray Measurement" or longest point from the center, to determine fabric cut length.

EXAMPLE:



+ 1/2 inch = (Hem turn under)
+ 2 inches = (1 inch rod pocket X 2)
+ 1 inch = (1/2 inch header X 2)
3 1/2 inches

+ 11 inches = (Ray Measurement)

+ 7 inches = (3-1/2 inches X 2 for Rosette)
+ 2 inches = (Seam allowances)
23-1/2 inches = Fabric Cut Length

FABRIC CUT WIDTH (For unlined treatments)

Measure distance around the inside of your window, also known as the perimeter measurement measurement:

Multiply by 1-1/2 or 2 X 1-1/2 = (Fullness) times for fullness:

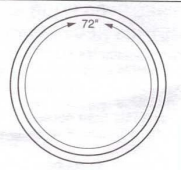
Add hem allowance: + 2 inches = (Hem allowances)
= Cut width of fabric ÷ by fabric width = number of fabric widths needed

EXAMPLE:

72 inches = (Example)

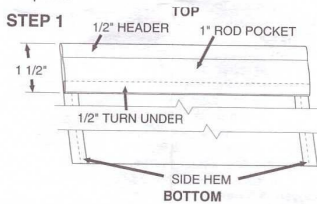
X 1-1/2 = (Fullness)

+ 2 inches = (Hem allowances)
110 inches = Cut width of fabric ÷ by fabric width = number of fabric widths needed

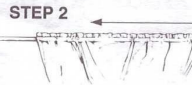


SEWING INSTRUCTIONS

Step 1: Turn top edge of fabric under 1/2 inch and press. To sew a 1/2 inch header and a 1 inch rod pocket, turn pressed fabric edge under 1-1/2 inches and sew close to pressed edge. Sew a 1/2 inch header and a 1 inch rod pocket at the top of the fabric panel.

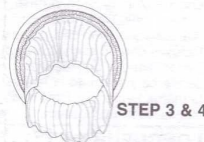


Step 2: Shirr fabric onto clear rod through pocket at top.



Step 3: Snap rod into clear clips inside window.

Step 4: Space fabric evenly around the rod.



Step 5: Gather and pull fabric in center and wrap a piece of string around fabric and pull taut.

Step 6: Tie a piece of string at least 10 inches long to a pencil.

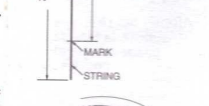
Step 7: Mark the string at 9-11 inches. Use 11" for a fuller rosette.



Step 8: Poke the pencil through the center of the rosette to the back of the window treatment and turn pencil so it lies flat against the fabric. The string should hang through the center of the rosette.



Step 9: Starting at one end of the fabric in the rosette, use the string to measure off 9-11 inches and mark fabric all along the outer edge using a marking pen.



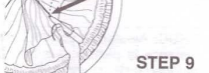
Step 10: Remove the clear rod and fabric from the clear mounting clips in the window.



Step 11: Remove the fabric from the rod.



Step 12: Cut off the center string used to gather the fabric in the center.



Step 13: Place fabric flat on the floor and cut fabric along marks. **NOTE: The cut fabric will not be straight.**

STEP 13

FABRIC WILL LOOK LIKE THIS FOR AN OCTAGONAL WINDOW



3/4" ROD POCKET



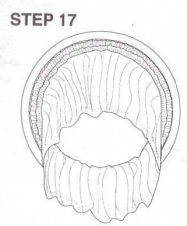
STEP 14, 15 & 16

Step 14: Turn cut edge under 1/2 inch and press along the curved line.

Step 15: Turn pressed edge under 3-1/2 inches and stitch close to the edge to create a 3-1/2 inch hem.

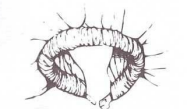
Step 16: Sew a 3/4 inch rod pocket for the plastic strap at the bottom of the hem.

Step 17: Shirr fabric back on rod and install into clear mounting clips. Space fabric evenly in window. (Same as steps 2-4).

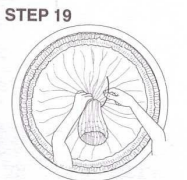


STEP 18

Step 18: Shirr plastic strap into bottom rod pocket and lock into first locking position. Do not pull tight yet.



Step 19: Pull fabric taut into center and wrap with plastic strap. Arrange fabric folds evenly and tighten the plastic strap.



Step 20: Pull fabric through center of circle and around itself to create the center rosette. Arrange fabric in rosette evenly.



Step 21: When center rosette is in place, tighten both plastic straps and cut off excess strap.

