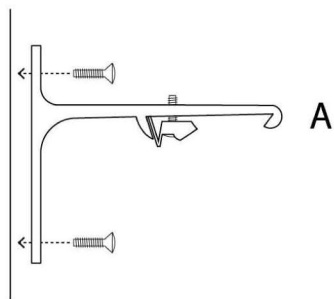


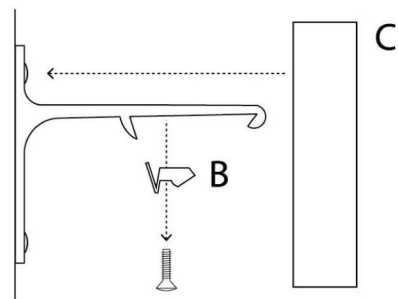
## Traverse Installation

①



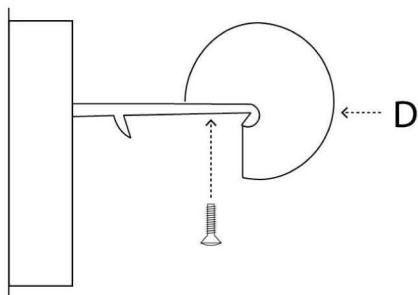
Mount wall brackets (A) to wall with appropriate hardware for wall type.

②



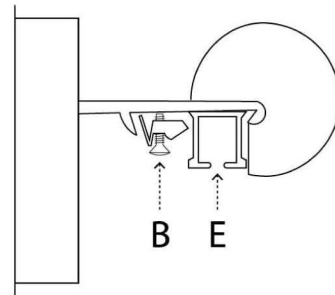
Remove plastic Rod clip (B) and slide on bracket cover plate (C), magnet will hold it in place.

③



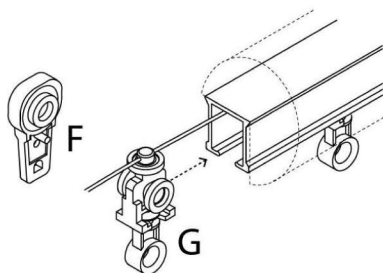
Place decorative wood Rod (D) over bracket arms making sure bracket arm is pushed as far forward as possible into center of wood Rod. Then attach Rod to bracket with included small wood screws.

④



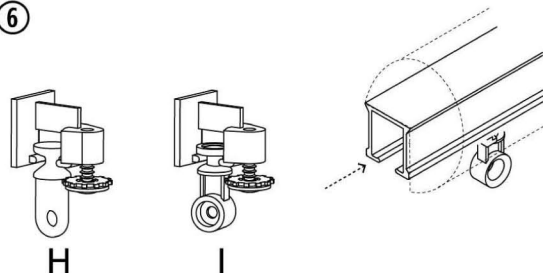
Place metal track (E) under lip of bracket arm and secure with plastic Rod clip (B).

⑤



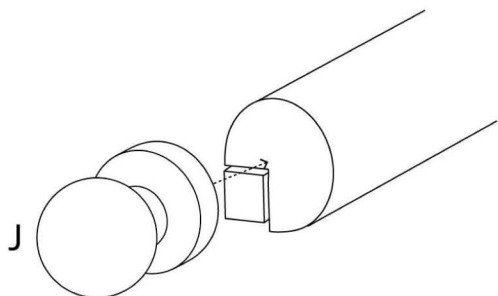
Load either ball bearing carriers (F) for Pinch Pleat or corded Ripplefold™ carriers (G) for Ripplefold™ treatment.

⑥



Insert end stop (H) for Pinch Pleat or (I) for Rippplefold™ into metal track and tighten screw.

⑦



Screw finial (J) into center of wood Rod.